



T.J.S ENGINEERING COLLEGE

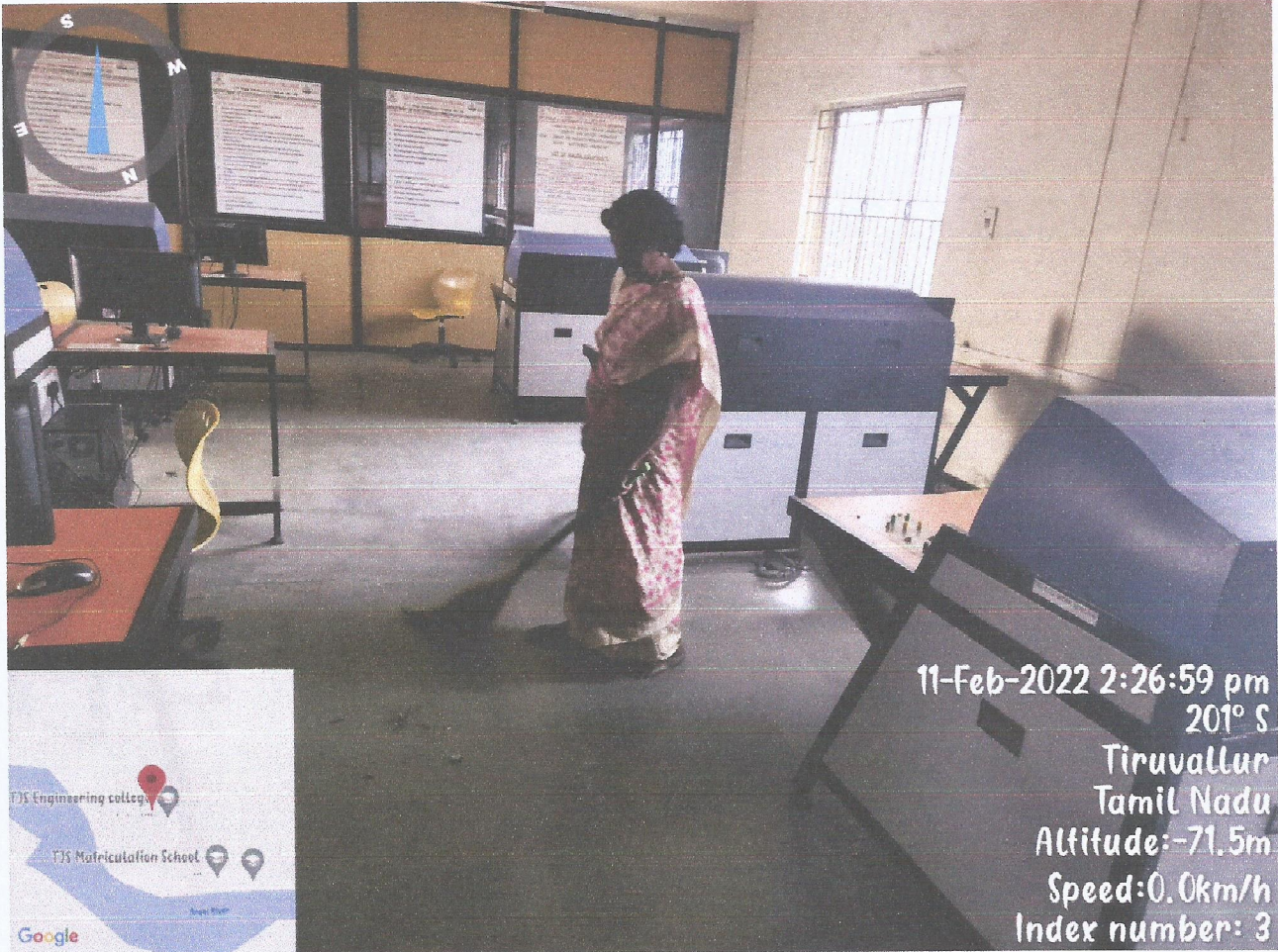
Approved by AICTE, New Delhi & Affiliated to Anna University, Chennai.

Accredited by NAAC / ISO 9001:2015 Certified Institution.

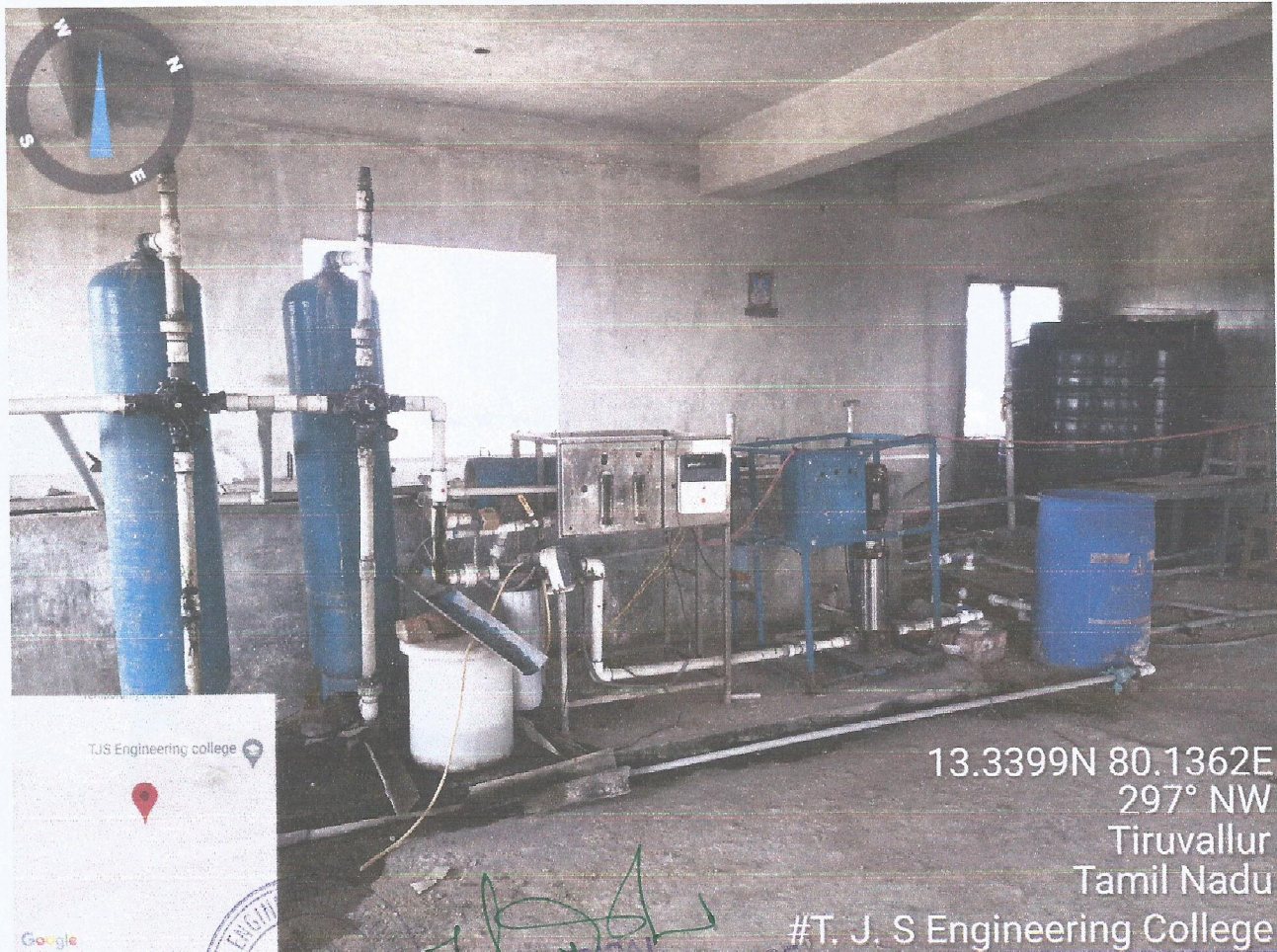
TJS Nagar, Peruvoyal, Near Kavaraipettai, Gummidipoondi Taluk, Thiruvallur District -601206



Geo Tagged Photos



11-Feb-2022 2:26:59 pm
201° S
Tiruvallur
Tamil Nadu
Altitude:-71.5m
Speed:0.0km/h
Index number: 3

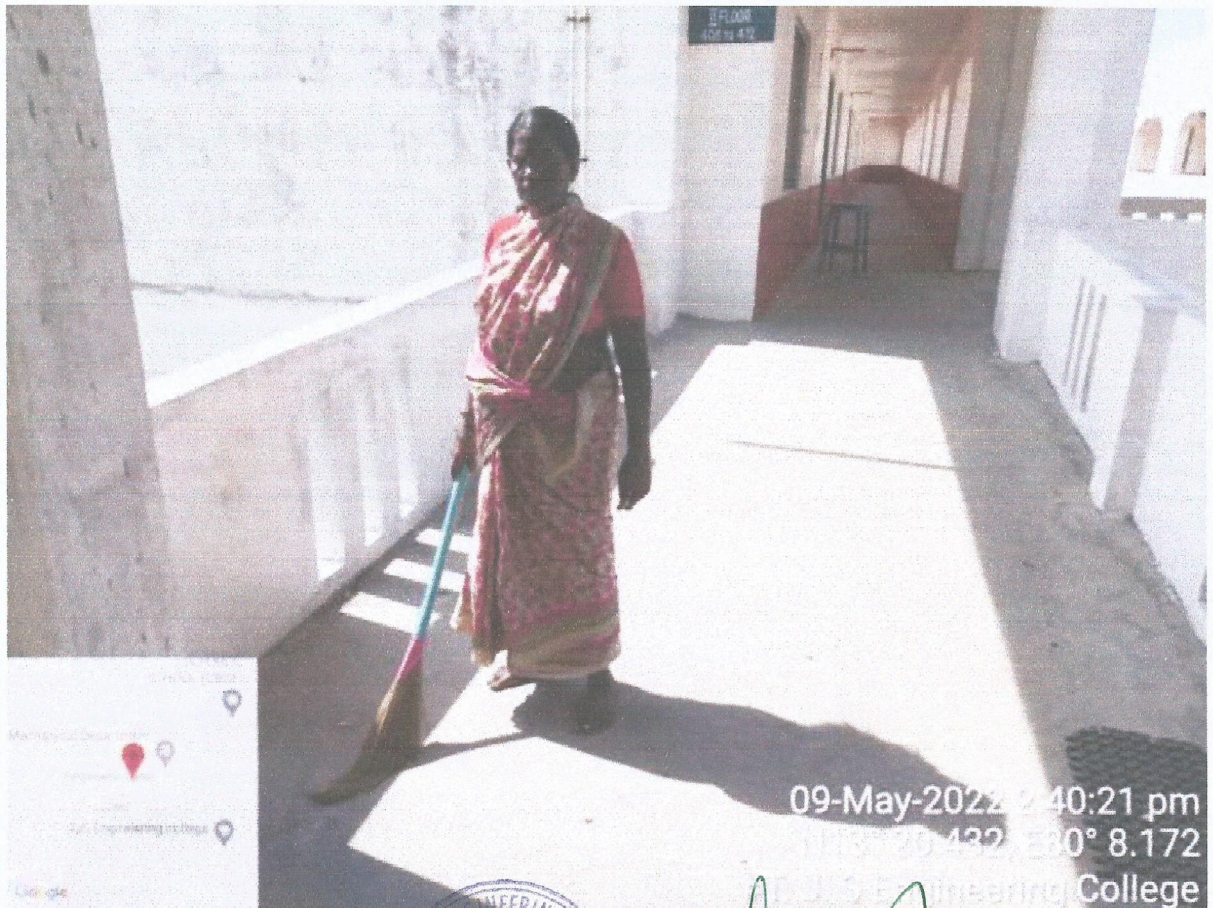


13.3399N 80.1362E
297° NW
Tiruvallur
Tamil Nadu
#T. J. S Engineering College

PRINCIPAL
T.J.S. ENGINEERING COLLEGE
Peruvoyal, Kovaraipattai,
Gummidipoondi Taluk,
Dist - 601 206.



09-May-2022 2:25:36 pm
N13° 20.748, E80° 8.582
Peruvaili
Tamil Nadu
#T. J. S Engineering College



09-May-2022 2:40:21 pm
N13° 20.432, E80° 8.172
T. J. S Engineering College



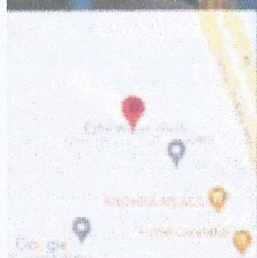
PRINCIPAL
T.J.S. ENGINEERING COLLEGE
Peruvaili, Kavaraipeitai,



09-May-2022 2:40:57 pm
N13° 20.433, E80° 8.172
#T. J. S Engineering College



09-May-2022 2:30:01 pm
N13° 20.748, E80° 8.582
Peruvaili
Tamil Nadu
#T. J. S Engineering College



[Handwritten Signature]
PRINCIPAL
T.J.S. ENGINEERING COLLEGE
Peruvaili