



T.J.S ENGINEERING COLLEGE

Approved by AICTE, New Delhi & Affiliated to Anna University, Chennai.

Accredited by NAAC / ISO 9001:2015 Certified Institution.

TJS Nagar, Peruvoyal, Near Kavaraipettai, Gummidipoondi Taluk, Thiruvallur District -601206

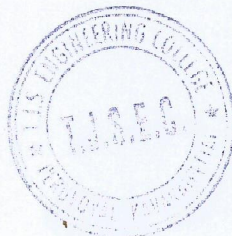
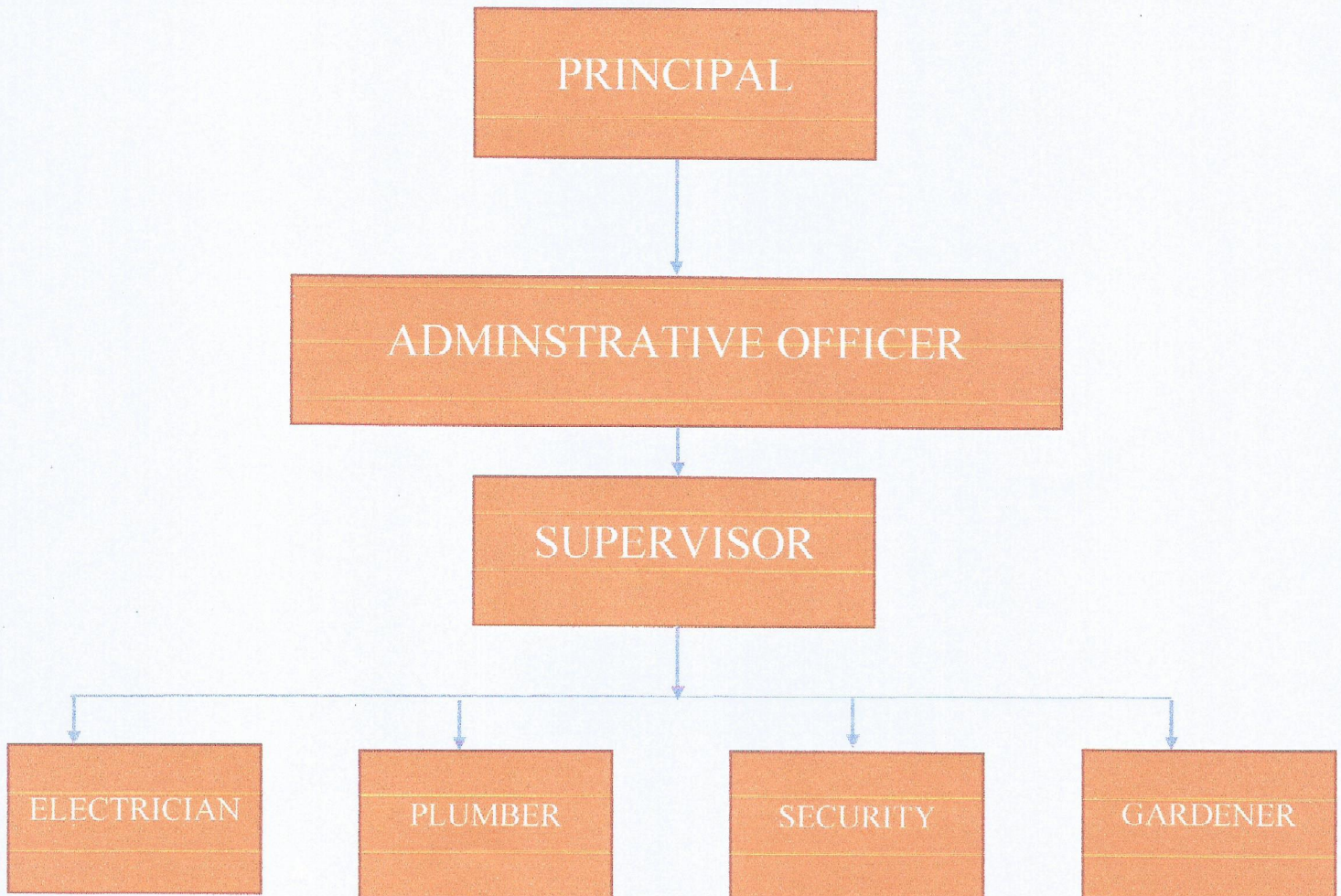


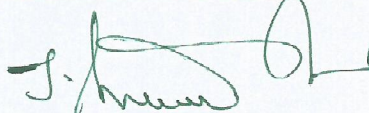
Flowchart (Organization)

FLOW CHART



CAMPUS MAINTENANCE:

The campus maintenance is handled by the Supervisor. He is in charge of four divisions as Electrician, Plumber, Security carpenter and Gardening. Each division is handled by a supervisor and is employed by respective skill workers.



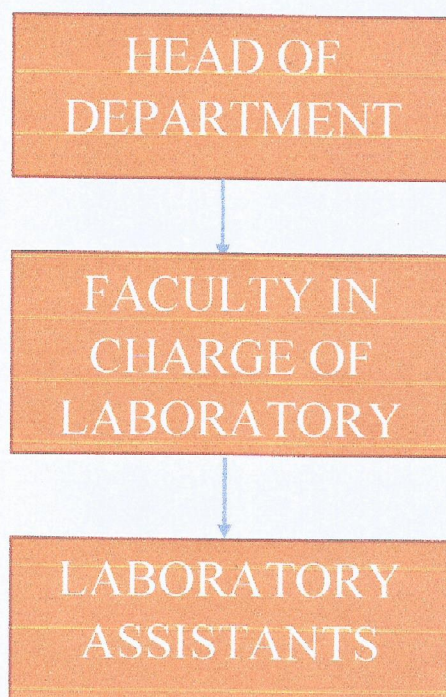
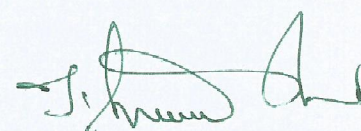

PRINCIPAL

T.J.S. ENGINEERING COLLEGE
 Peruvoyal, Kavaraipettai,
 Gummidipoondi Taluk,
 Thiruvallur Dist - 601 206.

	T.J.S. ENGINEERING COLLEGE	
	TJS Nagar, Kavaraipettai, Chennai 601206	
	FLOW CHART	

LABORATORY EQUIPMENT:

The equipment and machineries in the laboratory are maintained by the lab In-charge with the advice of HOD through proper process. The flow of this process is as follows.

PRINCIPAL
T.J.S. ENGINEERING COLLEGE
 Peruvoyal, Kavaraipettai,
 Gummidipoondi Taluk,
 Thiruvallur Dist - 601 206.